

**B.E.G.****LUXOMAT®**

- Voltage: 230 V AC  $\pm 10\%$  50 Hz
- Dimensions:  $\varnothing$  106 x 95 mm
- Settings: Casambi App

## PD4N-CAS

Prod.No. 93474 EAN: 4007529934744

### Order data

Designation	Colour	Art.No
PD4N-CAS	white	93474

### Accessories

Designation	Colour	Art.No
SM socle mounting set IP54 PD4N H	anthracite	93786
SM socle mounting set IP54 PD4N H	white	93465
SM socle mounting set IP54 PD4N H	black	93788
SM socle mounting set IP54 PD4N H	traffic white	93787
SM socle mounting set IP65 PD4N	white	93314
Corridor lens PD4N type A	white	93073
Corridor lens PD4N type A, Cover ring	traffic white	93742
Corridor lens PD4N type A, Cover ring	anthracite	93741
Corridor lens PD4N type A, Cover ring	black	93743

lens PD4N, Cover ring	anthracite	93731
lens PD4N, Cover ring	black	93733
lens PD4N, Cover ring	traffic white	93732
Wire basket BSK (Ø 200 x 90 mm)	white	92199
Wall holder PD2N/4N Typ A	white	93164

## Technical data

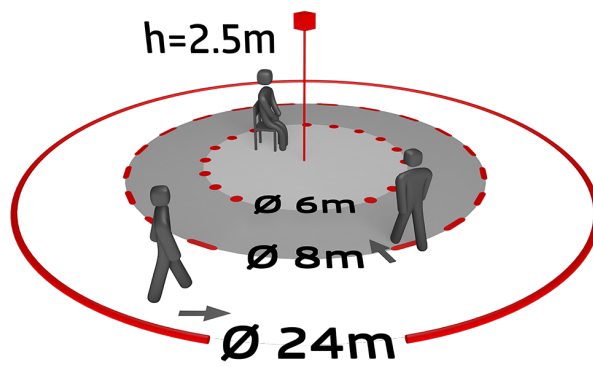
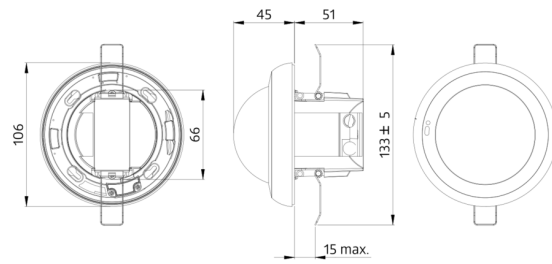
Voltage:	230 V AC ±10% 50 Hz
Dimensions:	Ø 106 x 95 mm
Settings:	Casambi App
Power consumption:	0.5 W
Detection area:	horizontal 360° oval (Ceiling mounting) max. Ø 24 m across max. Ø 8 m towards max. Ø 6.4 m seated
Range:	
Monitored area (tangential movement):	450 m <sup>2</sup> / 2.5 m mounting height
Mounting height min./max./recommended:	2 m / 10 m / 2.5 m
Degree / class of protection:	IP20 / Class II
Impact strength:	IK04
Ambient temperature:	-5 °C to +45 °C
Housing:	polycarbonate, UV-resistant white mat, similar to RAL9010
Material color:	
Number of PIR sensors:	4
<b>Channel 1 (lighting control)</b>	
Follow-up time:	1 sec - 60 min
Brightness set value:	1 - 4000 Lux
Light measuring:	Mixed light measuring

## Product information

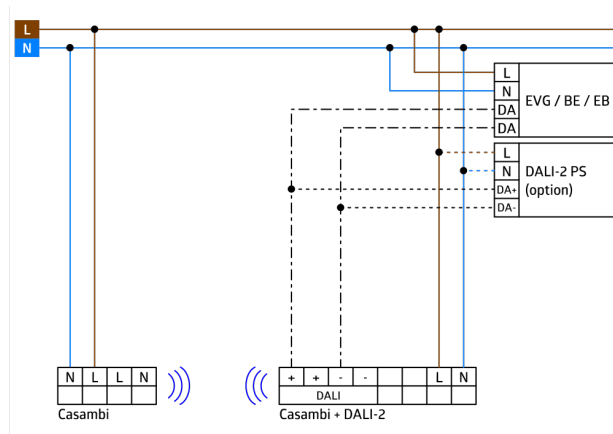
Casambi-enabled occupancy detector
Bright LED indication for commissioning
Mixed light measurement with internal and external light sensor
Weighting between internal and external light sensor can be adapted to suit the application
Adjustment of the reflection factor and input of the luminosity for the display of the actual luminosity in the app
Extension of the detection area with additional B.E.G. Casambi devices possible
Individual adaption of detection sensitivity for each PIR sensor
Detection area can be restricted with blinds
Functions adjustable via Casambi app
Including pre-assembled spring clamp with strain relief and contact protection cap for recessed ceiling mounting
Accessory for surface mounting available
Accessories for wall mounting optionally available
Further accessories for colour matching optionally available

### Application examples:

entrance halls, corridors/hallways, open-plan offices, conference rooms, classrooms/seminar rooms, sports halls/storage rooms, underground car parks, staircases, toilets, equipment rooms, small offices



# CASAMBI



## Accessories



### SM socle mounting set IP54 PD4N H

Art.No: 93786

Dimensions: Ø 110 x 45 mm  
Degree / class of protection: IP54  
Material color: anthracite, similar to RAL7016



### SM socle mounting set IP54 PD4N H

Art.No: 93465

Dimensions: Ø 110 x 45 mm  
Degree / class of protection: IP54  
Material color: white, similar to RAL9010



### SM socle mounting set IP54 PD4N H

Art.No: 93788

Dimensions: Ø 110 x 45 mm  
Degree / class of protection: IP54  
Material color: black, similar to RAL9005



### SM socle mounting set IP54 PD4N H

Art.No: 93787

Dimensions: Ø 110 x 45 mm  
Degree / class of protection: IP54  
Material color: traffic white, similar to RAL9016



### SM socle mounting set IP65 PD4N

Art.No: 93314

Dimensions: 133 x 133 x 69 mm  
Degree / class of protection: IP65  
Material color: white



### Corridor lens PD4N type A

Art.No: 93073

Detection area: horizontal 360°  
(Ceiling mounting)  
Range: max. &Oslash; 40 m across<br>max. &Oslash; 20 m towards  
Monitored area (tangential movement): 250 m<sup>2</sup> / 2.5 m mounting height



### Corridor lens PD4N type A, Cover ring

Art.No: 93742

Detection area: horizontal 360°  
(Ceiling mounting)  
Range: max. &Oslash; 40 m across<br>max. &Oslash; 20 m towards  
Monitored area (tangential movement): 250 m<sup>2</sup> / 2.5 m mounting height



### Corridor lens PD4N type A, Cover ring

Art.No: 93741

Detection area: horizontal 360°  
(Ceiling mounting)  
Range: max. &Oslash; 40 m across<br>max. &Oslash; 20 m towards  
Monitored area (tangential movement): 250 m<sup>2</sup> / 2.5 m mounting height



### Corridor lens PD4N type A, Cover ring

Art.No: 93743

Detection area: horizontal 360°  
(Ceiling mounting)  
Range: max. &Oslash; 40 m across<br>max. &Oslash; 20 m towards  
Monitored area (tangential movement): 250 m<sup>2</sup> / 2.5 m mounting height



**lens PD4N, Cover ring**

Art.No: 93731

Detection area: horizontal 360° (Ceiling mounting)

Range: max. &Oslash; 24 m across<br>max. &Oslash; 8 m towards<br>max. &Oslash; 6.4 m seated

Monitored area (tangential movement): 450 m<sup>2</sup> / 2.5 m mounting height



**lens PD4N, Cover ring**

Art.No: 93733

Detection area: horizontal 360° (Ceiling mounting)

Range: max. &Oslash; 24 m across<br>max. &Oslash; 8 m towards<br>max. &Oslash; 6.4 m seated

Monitored area (tangential movement): 450 m<sup>2</sup> / 2.5 m mounting height



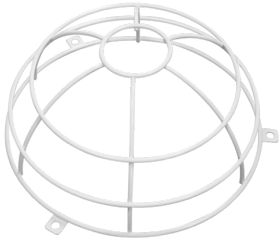
**lens PD4N, Cover ring**

Art.No: 93732

Detection area: horizontal 360° (Ceiling mounting)

Range: max. &Oslash; 24 m across<br>max. &Oslash; 8 m towards<br>max. &Oslash; 6.4 m seated

Monitored area (tangential movement): 450 m<sup>2</sup> / 2.5 m mounting height



**Wire basket BSK (Ø 200 x 90 mm)**

Art.No: 92199

Dimensions: Ø 200 x 90 mm  
Impact strength: IK09  
Housing: coated steel basket



**Wall holder PD2N/4N Typ A**

Art.No: 93164

Dimensions: 133 x 106 x 66 mm  
Degree / class of protection: IP54  
Housing: polycarbonate, UV-resistant