

**B.E.G.****LUXOMAT<sup>®</sup>net**

## PD9-KNXs-DX-FC

Prod.No. 93520 EAN: 4007529935208

- Voltage: via KNX BUS
- Dimensions: Sensor head: Ø 45 x 28 mm,  
Power supply: 129 x 29 x 22 mm
- Typ. power input: 12 mA

### Order data

Designation	Colour	Art.No
PD9-KNXs-DX-FC	white	93520

### Accessories

Designation	Colour	Art.No
BLE-IR-Adapter	black	93067
IR-Adapter for Smartphones	black	92726
IR-PD-KNX	-	92123
IR-PD-KNX-Mini	-	93398
Cover ring PD9 Ø 36 mm	anthracite	92235
Cover ring PD9 Ø 36 mm	white	92238
Cover ring PD9 Ø 36 mm	silver	92237
Cover ring PD9 Ø 45 mm	white	92327
Cover ring PD9 Ø 45 mm	silver	92346
Cover IP65 for Sensor head PD9	transparent	92958
Square design frame PD9-FC	pure white	92993

## Technical data

Voltage:	via KNX BUS
Dimensions:	Sensor head: Ø 45 x 28 mm, Power supply: 129 x 29 x 22 mm
Typ. power input:	12 mA
Detection area:	horizontal 360° (Ceiling mounting) max. Ø 10 m across
Range:	max. Ø 6 m towards max. Ø 4 m seated
Monitored area (tangential movement):	78 m <sup>2</sup> / 2.5 m mounting height
Mounting height min./max./recommended:	2 m / 5 m / 2.5 m
Degree / class of protection:	IP20 / Class III
Impact strength:	IK03
Temperature measurement range:	-5 °C to +45 °C
Ambient temperature:	-25 °C to +55 °C
Housing:	polycarbonate, UV-resistant
Number of light sensors:	1
Material color:	white mat, similar to RAL9010
Number of PIR sensors:	1
KNX TP 256:	Yes
Cable length:	45 cm
Orientation light:	5 - 100 % / OFF / 1 min - 255 min
Night light:	5 - 100 %
Brightness set value:	5 - 2000 Lux

## Product information

KNX mini occupancy detector with integrated bus connector
KNX Secure ready
HCL/RGB control
Parameterisation from ETS 5 for integration into KNX systems
Individual adaption of the PIR sensor sensitivity
Mixed light measurement using internal and remote (optional) light sensors
Intelligent semi-automatic mode, occupancy-independent regulating mode (photoelectric switch), full automatic mode
1 x Light (for regulating or switching), 1 x slave output, 3 separate HVAC-blocs
Regulation of up to three lighting groups using offset (external influence possible)
Short presence, self-adjusting follow-up time, corridor function
Various locking functions
Soft-start
Two logic modules
Recall of light scenes
Deactivatable status indicators
The product database for import into the ETS database can be downloaded from the B.E.G. homepage.
Detection area can be extended thanks to master-slave-mode
Extensive optimization options for light measurement
Measured light value is communicated to the bus
Adaption of dimming curve
Bidirectionally remote control-capable with the IR adapter and the B.E.G. smartphone app
PIN code
IR remote control-capable via IR remote control (optionally)
5 button remote control, programmable at choice (accessory)
Programming button (phys. address) can be operated via remote control
HVAC mode (0=automatic, 1=comfort, 2=stand-by, 3=economy, 4=antifreeze/heat protection)
Manual influence via external KNX push buttons possible
Function control (heartbeat, cyclical sending)
Occupancy simulation

Forced switch-off

Intelligent central-off function

Premonition of switch-off

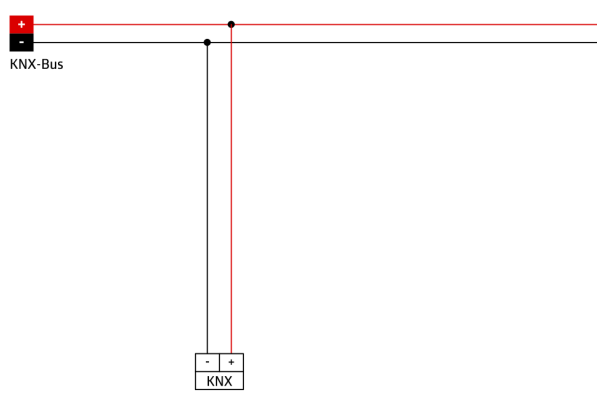
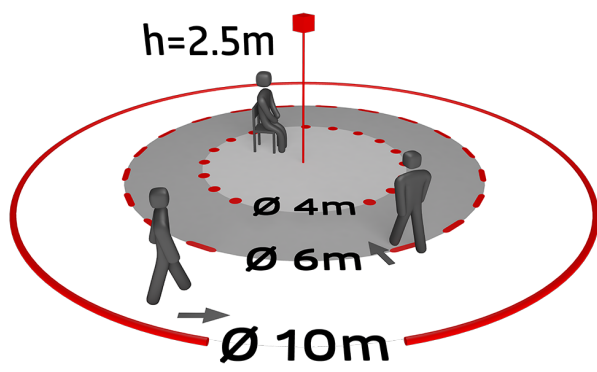
Burn-in function for fluorescent lamps selectable from 1h till 100h

Behaviour upon bus voltage return definable at choice

Variable safety pause after switching off the lights

**Typical applications:**

Offices, conference rooms, schools, nursery schools, hospitals



## Accessories



**BLE-IR-Adapter**  
Art.No: 93067

Dimensions: 40 x 55 x 103 mm  
Material color: black  
Frequency: 2.4 GHz ISM band, GFSK 0.2 dBm + 5.3 dBi = 5.5 dBm



**IR-Adapter for Smartphones**  
Art.No: 92726

Dimensions: 47 x 19 x 10 mm  
Degree / class of protection: IP20  
Ambient temperature: -20 °C to +40 °C



**IR-PD-KNX**  
Art.No: 92123

Battery: 3.0 V Lithium CR2032 (inclusive)  
Dimensions: 80 x 60 x 8 mm  
Material color: -



**IR-PD-KNX-Mini**  
Art.No: 93398

Battery: 3.0 V Lithium CR2032 (inclusive)  
Dimensions: 57 x 35 x 7 mm  
Material color: -



**Cover ring PD9 Ø 36 mm**  
Art.No: 92235

Dimensions: Ø 36 mm  
Housing: polycarbonate, UV-resistant  
Material color: anthracite glossy



**Cover ring PD9 Ø 36 mm**  
Art.No: 92238

Dimensions: Ø 36 mm  
Housing: polycarbonate, UV-resistant  
Material color: white glossy



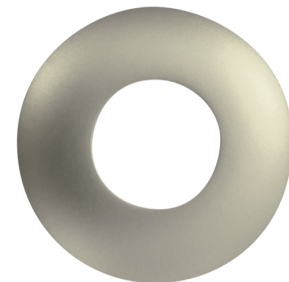
**Cover ring PD9 Ø 36 mm**  
Art.No: 92237

Dimensions: Ø 36 mm  
Housing: polycarbonate, UV-resistant  
Material color: silver glossy



**Cover ring PD9 Ø 45 mm**  
Art.No: 92327

Dimensions: Ø 45 mm  
Material color: white mat



**Cover ring PD9 Ø 45 mm**  
Art.No: 92346

Dimensions: Ø 45 mm  
Material color: silver mat



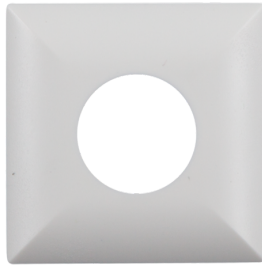
**Cover IP65 for Sensor head PD9**

Art.No: 92958

Degree / class of protection: IP65

Housing: UV-resistant

Material color: transparent



**Square design frame PD9-FC**

Art.No: 92993

Dimensions: 45 x 45 x 2.6 mm

Housing: polycarbonate, UV-resistant

Material color: pure white mat, similar to RAL9010