

B.E.G.**LUXOMAT®**

PD4N-M-DACO-1C DALI-2 Set 93463-93465-93073

- Voltage: 230 V AC $\pm 10\%$ 50 Hz
- Dimensions: $\varnothing 106 \times 95 \text{ mm} + \varnothing 110 \times 45 \text{ mm}$ (93465)
- Power consumption: approx. 2 W

Areas of application

- entrance halls
- corridors/hallways
- small offices
- open-plan offices
- conference rooms
- classrooms/seminar rooms
- sports halls/ storage rooms

Order data

Designation	Colour	Art.No
PD4N-M-DACO-1C DALI-2	white	93463
SM socle mounting set IP54 PD4N H	white	93465
Corridor lens PD4N type A	white	93073

Technical data

Voltage:	230 V AC \pm 10% 50 Hz
Dimensions:	Ø 106 x 95 mm + Ø 110 x 45 mm (93465)
Power consumption:	approx. 2 W
Slave devices:	up to 8
Detection area:	horizontal 360° (Ceiling mounting) (93073) max. Ø 40 m across max. Ø 20 m towards (93073) 250 m² / 2.5 m mounting height (93073)
Range:	2.4 m / 2.6 m / 2.5 m (93073)
Monitored area (tangential movement):	2.4 m / 2.6 m / 2.5 m (93073)
Mounting height min./max./recommended:	2.4 m / 2.6 m / 2.5 m (93073)
Degree / class of protection:	IP54 (93465)
Impact strength:	IK04
Ambient temperature:	-25 °C to +50 °C
Housing:	polycarbonate, UV-resistant white, similar to RAL9010 (93073)
Material color:	white, similar to RAL9010 (93073)

Channel 1 (lighting control)

DALI output:	80 mA (guaranteed), 125 mA (max.), shut down mechanism
Supported control gear:	DT0, DT5, DT6, DT7
Supported control devices:	- (single master)
Follow-up time:	1 min - 150 min
Orientation light:	10 - 30 % / OFF / 5 min - 60 min / ∞
Brightness set value:	10 - 2500 Lux

Channel 2 (HVAC or lighting control)

Switching power:	2300 W, $\cos \varphi$ = 1 1150 VA, $\cos \varphi$ = 0.5 800 W LED max. inrush current I_p (20 ms) = 165 A
------------------	---

Product information

Set : PD4N-M-DACO-1C DALI-2 + SM socle mounting set IP54 PD4N H white, similar to RAL9010 + Corridor lens PD4N type A white, similar to RAL9010

Occupancy detector with integrated DALI application controller for energy-efficient lighting control

DALI-2 certified product

Integrated DALI power supply

DALI interface for controlling digital, dimmable ECGs in broadcast mode

Manual switching or dimming via conventional pushbuttons

Bidirectional IR communication enables fast integration into the project management function of the B.E.G. One app

Complete range of functions can only be activated using the BLE-IR-Adapter and a compatible Smartphone or Tablet (Android, iOS).

Semi-automatic, full automatic, presence-independent or light-independent mode adjustable

Powerful switching relay for different operating modes, e.g. Cut-off function for DALI ballasts, HVAC, blackboard illumination.

Adjustable regulation dynamics (minimum and maximum values)

Adjustable speed and delay of the regulation

Single master version, not networkable

Detection area can be extended by using slave devices

Mixed light measurement with internal and external light sensor

DALI output power can be increased with accessories

Integrated daylight harvesting circuit (or switch output)

Adjustable switch-on value

Last value - Reminder function for switch-on value

Adjustable brightness set value and reflection factor

Indication of the current light sensor value in the B.E.G. One App

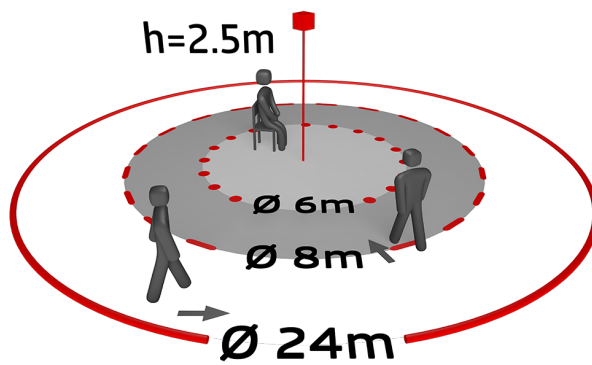
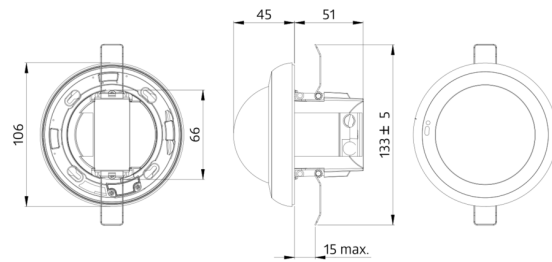
Self-check and display of device errors in the B.E.G. One App

Status LEDs can be activated / deactivated

PIN code

Corridor function - Deactivates the possibility to switch off the light via the push-button

Type of contact:	1x μ -contact, dry, bistable	Number of DALI participants can be determined quickly and reliably via the B.E.G. Online DALI Line Planner
Follow-up time:	5 min – 120 min, Alarm pulse, Pulse	Avoidance of standby losses of the lighting system in accordance with EnEV DIN V 18599-4
Light measuring:	Mixed light measuring	Software is backwards compatible with the first generation (except DSI, double lock and corridor function)
		Factory setting 10 min follow-up time and 500 lux brightness set value
		Including pre-assembled spring clamp with strain relief and contact protection cap for recessed ceiling mounting
		Accessory for surface mounting available
		Accessories for wall mounting optionally available
		Further accessories for colour matching optionally available



Set items

To receive the bundle according to the technical specification, please order the items listed.



PD4N-M-DACO-1C DALI-2

Art.No: 93463

Voltage: 230 V AC $\pm 10\%$ 50 Hz
Dimensions: \varnothing 106 x 95 mm
Power consumption: approx. 2 W



SM socle mounting set IP54 PD4N H

Art.No: 93465

Dimensions: \varnothing 110 x 45 mm
Degree / class of protection: IP54
Material color: white, similar to
RAL9010



Corridor lens PD4N type A

Art.No: 93073

Detection area: horizontal 360° (Ceiling
mounting)
Range: max. \varnothing 40 m across
max. \varnothing 20 m towards
Monitored area (tangential movement): 250
m² / 2.5 m mounting height