

**B.E.G.****LUXOMAT®**

## PD4N-CAS Set 93474-93465

- Voltage: 230 V AC  $\pm 10\%$  50 Hz
- Dimensions:  $\varnothing 106 \times 95 \text{ mm} + \varnothing 110 \times 45 \text{ mm}$  (93465)
- Settings: Casambi App

### Order data

| Designation                       | Colour | Art.No |
|-----------------------------------|--------|--------|
| PD4N-CAS                          | white  | 93474  |
| SM socle mounting set IP54 PD4N H | white  | 93465  |

## Technical data

|   |   |
|---|---|
| Voltage:                                  | 230 V AC ±10%<br>50 Hz  |
| Dimensions:                               | <b>Ø 106 x 95<br/>mm + Ø 110 x<br/>45 mm<br/>(93465)</b>  |
| Settings:                                 | Casambi App   |
| Power consumption:                        | 0.5 W   |
| Detection area:                           | horizontal 360°<br>oval (Ceiling<br>mounting)<br>max. Ø 24 m<br>across<br>max. Ø 8 m<br>towards<br>max. Ø 6.4 m<br>seated |
| Range:                                    |   |
| Monitored area (tangential<br>movement):  | 450 m <sup>2</sup> / 2.5 m<br>mounting<br>height  |
| Mounting height<br>min./max./recommended: | 2 m / 10 m / 2.5<br>m   |
| Degree / class of<br>protection:          | <b>IP54 (93465)</b>   |
| Impact strength:                          | IK04  |
| Ambient temperature:                      | -5 °C to +45 °C   |
| Housing:                                  | polycarbonate,<br>UV-resistant  |
| Material color:                           | <b>white, similar<br/>to RAL9010<br/>(93465)</b>  |
| Number of PIR sensors:                    | 4   |
| <b>Channel 1 (lighting<br/>control)</b>   |   |
| Follow-up time:                           | 1 sec - 60 min  |
| Brightness set value:                     | 1 - 4000 Lux  |
| Light measuring:                          | Mixed light<br>measuring  |

## Product information

Set : PD4N-CAS + SM socle mounting set IP54 PD4N  
H white, similar to RAL9010

Casambi-enabled occupancy detector

Bright LED indication for commissioning

Mixed light measurement with internal and external light  
sensor

Weighting between internal and external light sensor can be  
adapted to suit the application

Adjustment of the reflection factor and input of the luminosity  
for the display of the actual luminosity in the app

Extension of the detection area with additional B.E.G. Casambi  
devices possible

Individual adaption of detection sensitivity for each PIR sensor

Detection area can be restricted with blinds

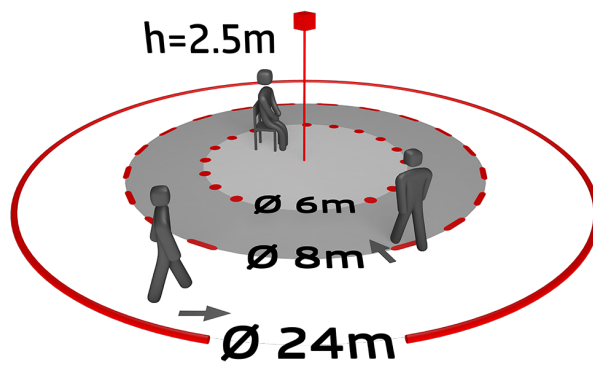
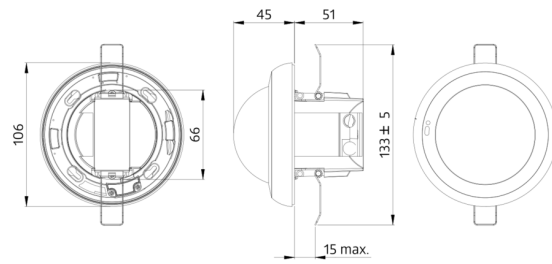
Functions adjustable via Casambi app

Including pre-assembled spring clamp with strain relief and  
contact protection cap for recessed ceiling mounting

Accessory for surface mounting available

Accessories for wall mounting optionally available

Further accessories for colour matching optionally available



# CASAMBI



## Set items

To receive the bundle according to the technical specification, please order the items listed.



### **PD4N-CAS**

Art.No: 93474

Voltage: 230 V AC  $\pm 10\%$  50 Hz

Dimensions:  $\varnothing$  106 x 95 mm

Settings: Casambi App



### **SM socle mounting set IP54 PD4N H**

Art.No: 93465

Dimensions:  $\varnothing$  110 x 45 mm

Degree / class of protection: IP54

Material color: white, similar to RAL9010