

B.E.G.**LUXOMAT®**

PD4N-CAS DALI-2 Set 93473-93788

- Voltage: 230 V AC $\pm 10\%$ 50 Hz
- Dimensions: $\varnothing 106 \times 95 \text{ mm} + \varnothing 110 \times 45 \text{ mm}$ (93788)
- Settings: Casambi App

Order data

Designation	Colour	Art.No
PD4N-CAS DALI-2	white	93473
SM socle mounting set IP54 PD4N H	black	93788

Technical data

Voltage:	230 V AC ±10% 50 Hz
Dimensions:	Ø 106 x 95 mm + Ø 110 x 45 mm (93788)
Settings:	Casambi App
Power consumption:	0.5 W
Detection area:	horizontal 360° oval (Ceiling mounting) max. Ø 24 m across max. Ø 8 m towards max. Ø 6.4 m seated
Range:	450 m ² / 2.5 m mounting height
Monitored area (tangential movement):	2 m / 10 m / 2.5 m
Mounting height min./max./recommended:	
Degree / class of protection:	IP54 (93788)
Impact strength:	IK04
Ambient temperature:	-5 °C to +45 °C
Housing:	polycarbonate, UV-resistant
Material color:	black, similar to RAL9005 (93788)
Number of PIR sensors:	4
Channel 1 (lighting control)	
DALI output:	80 mA (guaranteed), 125 mA (max.), shut down mechanism
Supported control gear:	DT0, DT5, DT6, DT7, DT8
Supported control devices:	- (single master)
Follow-up time:	1 sec - 60 min
Brightness set value:	1 - 4000 Lux
Light measuring:	Mixed light measuring

Product information

Set : PD4N-CAS DALI-2 + SM socle mounting set IP54
PD4N H black, similar to RAL9005

Casambi-enabled occupancy detector

DALI-2 interface for controlling digital dimmable ECGs in
broadcast/multicast mode

Integrated temperature monitoring and short-circuit detection

Version as single-master device, can be networked wirelessly

DALI output power can be increased with accessories

Bright LED indication for commissioning

Mixed light measurement with internal and external light
sensor

Weighting between internal and external light sensor can be
adapted to suit the application

Adjustment of the reflection factor and input of the luminosity
for the display of the actual luminosity in the app

Extension of the detection area with additional B.E.G. Casambi
devices possible

Individual adaption of detection sensitivity for each PIR sensor

Detection area can be restricted with blinds

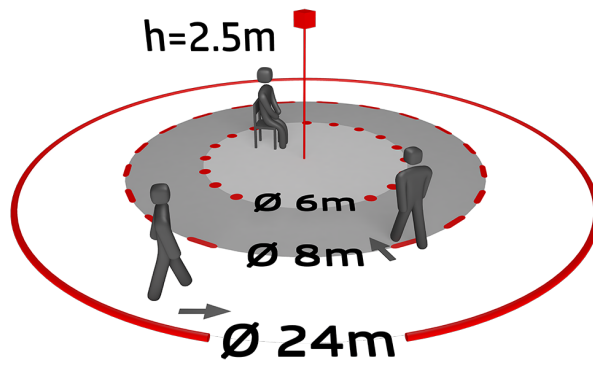
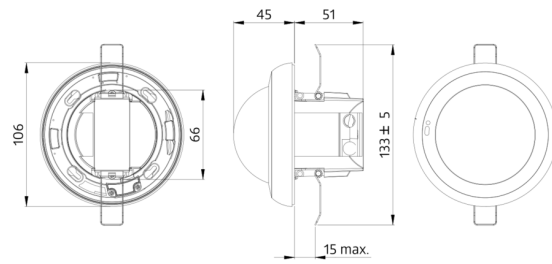
Functions adjustable via Casambi app

Including pre-assembled spring clamp with strain relief and
contact protection cap for recessed ceiling mounting

Accessory for surface mounting available

Accessories for wall mounting optionally available

Further accessories for colour matching optionally available



CASAMBI



Set items

To receive the bundle according to the technical specification, please order the items listed.



PD4N-CAS DALI-2

Art.No: 93473

Voltage: 230 V AC $\pm 10\%$ 50 Hz

Dimensions: \varnothing 106 x 95 mm

Settings: Casambi App



SM socle mounting set IP54 PD4N H

Art.No: 93788

Dimensions: \varnothing 110 x 45 mm

Degree / class of protection: IP54

Material color: black, similar to RAL9005