

B.E.G.

LUXOMAT®



PD4N-CAS DALI-2 Set 93473-93073

- Voltage: 230 V AC \pm 10% 50 Hz
- Dimensions: \varnothing 106 x 95 mm
- Settings: Casambi App

Order data

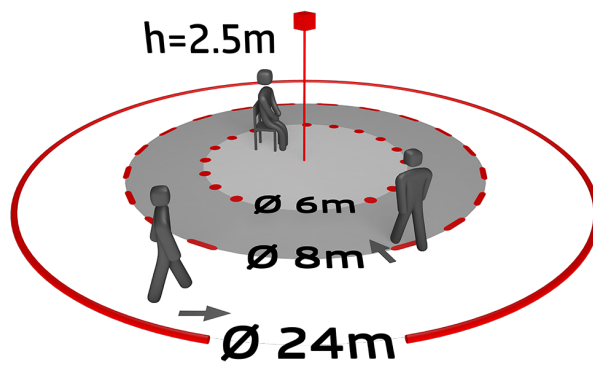
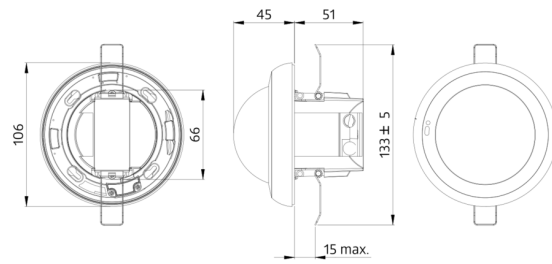
Designation	Colour	Art.No
PD4N-CAS DALI-2	white	93473
Corridor lens PD4N type A	white	93073

Technical data

Voltage:	230 V AC ±10% 50 Hz
Dimensions:	Ø 106 x 95 mm
Settings:	Casambi App
Power consumption:	0.5 W
Detection area:	horizontal 360° (Ceiling mounting) (93073) max. Ø 40 m across max. Ø 20 m towards (93073) 250 m² / 2.5 m mounting height (93073)
Range:	2.4 m / 2.6 m / 2.5 m (93073)
Monitored area (tangential movement):	
Mounting height min./max./recommended:	2.4 m / 2.6 m / 2.5 m (93073)
Degree / class of protection:	IP20 / Class II
Impact strength:	IK04
Ambient temperature:	-5 °C to +45 °C
Housing:	polycarbonate, UV-resistant white, similar to RAL9010 (93073)
Material color:	
Number of PIR sensors:	4
Channel 1 (lighting control)	
DALI output:	80 mA (guaranteed), 125 mA (max.), shut down mechanism
Supported control gear:	DT0, DT5, DT6, DT7, DT8
Supported control devices:	- (single master)
Follow-up time:	1 sec - 60 min
Brightness set value:	1 - 4000 Lux
Light measuring:	Mixed light measuring

Product information

Set : PD4N-CAS DALI-2 + Corridor lens PD4N type A white, similar to RAL9010
Casambi-enabled occupancy detector
DALI-2 interface for controlling digital dimmable ECGs in broadcast/multicast mode
Integrated temperature monitoring and short-circuit detection
Version as single-master device, can be networked wirelessly
DALI output power can be increased with accessories
Bright LED indication for commissioning
Mixed light measurement with internal and external light sensor
Weighting between internal and external light sensor can be adapted to suit the application
Adjustment of the reflection factor and input of the luminosity for the display of the actual luminosity in the app
Extension of the detection area with additional B.E.G. Casambi devices possible
Individual adaption of detection sensitivity for each PIR sensor
Detection area can be restricted with blinds
Functions adjustable via Casambi app
Including pre-assembled spring clamp with strain relief and contact protection cap for recessed ceiling mounting
Accessory for surface mounting available
Accessories for wall mounting optionally available
Further accessories for colour matching optionally available



CASAMBI



Set items

To receive the bundle according to the technical specification, please order the items listed.



PD4N-CAS DALI-2

Art.No: 93473

Voltage: 230 V AC $\pm 10\%$ 50 Hz

Dimensions: \varnothing 106 x 95 mm

Settings: Casambi App



Corridor lens PD4N type A

Art.No: 93073

Detection area: horizontal 360° (Ceiling mounting)

Range: max. \varnothing 40 m across

max. \varnothing 20 m towards

Monitored area (tangential movement): 250 m² / 2.5 m mounting height