

**B.E.G.****LUXOMAT®**

## PD4N-CAS DALI-2 Set 93473-92199

- Voltage: 230 V AC  $\pm$ 10% 50 Hz
- Dimensions: **Ø 200 x 90 mm (92199)**
- Settings: Casambi App

### Order data

Designation	Colour	Art.No
PD4N-CAS DALI-2	white	93473
Wire basket BSK (Ø 200 x 90 mm)	white	92199

## Technical data

Voltage:	230 V AC ±10% 50 Hz
Dimensions:	<b>Ø 200 x 90 mm (92199)</b>
Settings:	Casambi App
Power consumption:	0.5 W
Detection area:	horizontal 360° oval (Ceiling mounting) max. Ø 24 m across max. Ø 8 m towards max. Ø 6.4 m seated
Range:	
Monitored area (tangential movement):	450 m <sup>2</sup> / 2.5 m mounting height
Mounting height min./max./recommended:	2 m / 10 m / 2.5 m
Degree / class of protection:	IP20 / Class II
Impact strength:	<b>IK09 (92199)</b>
Ambient temperature:	-5 °C to +45 °C
Housing:	<b>polycarbonate, UV-resistant + coated steel basket (92199)</b>
Material color:	white mat, similar to RAL9010
Number of PIR sensors:	4
<b>Channel 1 (lighting control)</b>	
DALI output:	80 mA (guaranteed), 125 mA (max.), shut down mechanism
Supported control gear:	DT0, DT5, DT6, DT7, DT8
Supported control devices:	- (single master)
Follow-up time:	1 sec - 60 min
Brightness set value:	1 - 4000 Lux
Light measuring:	Mixed light measuring

## Product information

Set : PD4N-CAS DALI-2 + Wire basket BSK (Ø 200 x 90 mm) white

Casambi-enabled occupancy detector

DALI-2 interface for controlling digital dimmable ECGs in broadcast/multicast mode

Integrated temperature monitoring and short-circuit detection

Version as single-master device, can be networked wirelessly

DALI output power can be increased with accessories

Bright LED indication for commissioning

Mixed light measurement with internal and external light sensor

Weighting between internal and external light sensor can be adapted to suit the application

Adjustment of the reflection factor and input of the luminosity for the display of the actual luminosity in the app

Extension of the detection area with additional B.E.G. Casambi devices possible

Individual adaption of detection sensitivity for each PIR sensor

Detection area can be restricted with blinds

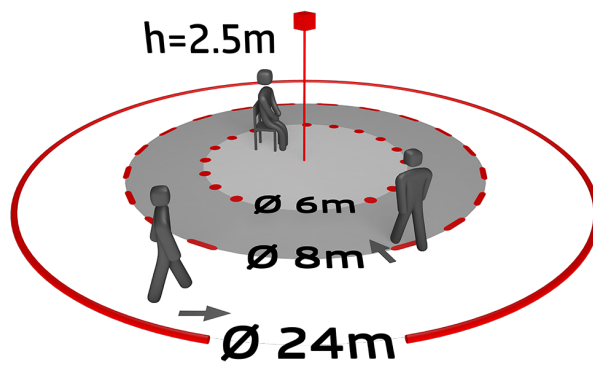
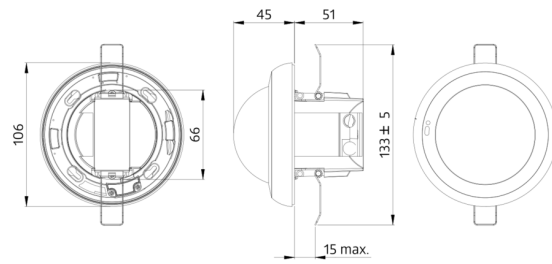
Functions adjustable via Casambi app

Including pre-assembled spring clamp with strain relief and contact protection cap for recessed ceiling mounting

Accessory for surface mounting available

Accessories for wall mounting optionally available

Further accessories for colour matching optionally available



# CASAMBI



## Set items

To receive the bundle according to the technical specification, please order the items listed.



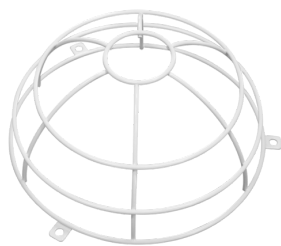
### **PD4N-CAS DALI-2**

Art.No: 93473

Voltage: 230 V AC  $\pm 10\%$  50 Hz

Dimensions:  $\varnothing$  106 x 95 mm

Settings: Casambi App



### **Wire basket BSK ( $\varnothing$ 200 x 90 mm)**

Art.No: 92199

Dimensions:  $\varnothing$  200 x 90 mm

Impact strength: IK09

Housing: coated steel basket